

# Children's Heart Foundation



## Annual Report 2005- 2006

---

Address: Patient Resource Centre, G/F, Main Block,  
Grantham Hospital, 125 Wong Chuk Hang Road,  
Aberdeen, Hong Kong

Tel: 2553 0331

Fax: 2553 4886

E-mail: [chf@childheart.org.hk](mailto:chf@childheart.org.hk)

Website: [www.childheart.org.hk](http://www.childheart.org.hk)



# Children's Heart Foundation

## Contents

<b>Contents</b>	<b>Page</b>
Background	P.2
Organization Structure	P.3 - P.4
Message of Chairlady	P.5 - P.9
Notice of Annual General Meeting	P.10
Major Members' Activities 2005/2006	P.11 - P.12
Major Fundraising Activities 2005/2006	P.13 - P.14
Statistics	P.15 - P.20
Report of Executive Committee	1 – 2
Report of The Honorary Auditor	3
Income and Expenditure Statement	4
Balance Sheet	5
Cash Flow Statement	6
Notes on the Financial Statements	7 - 14



# Children's Heart Foundation

## Background

The Children's Heart Foundation (CHF) is a registered charitable organization devoted to supporting children suffering from congenital heart disease. It was set up on 10<sup>th</sup> November 1994 by a group of concerned parents with children with congenital heart conditions.

### Objectives

1. To raise public awareness of congenital heart disease.
2. To provide financial and psychological support to families with children suffering from congenital heart disease.
3. To support the development of technology and methods to detect and treat congenital heart disease.

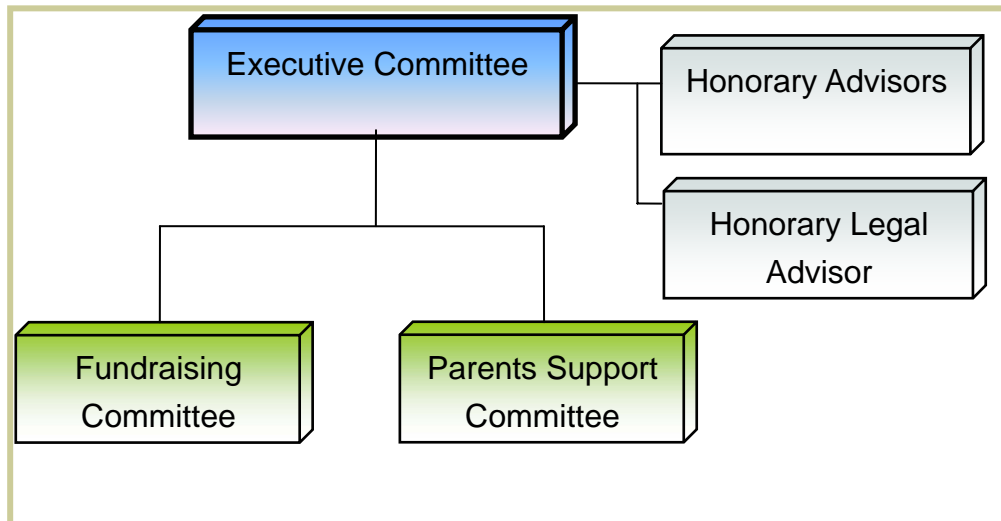
### Services

1. Financial support for treatment, including therapeutic catheterization and pacemakers.
2. Purchase of medical equipment.
3. Mutual support group for parents and patients.
4. Regular educational programs including seminars, talks and exhibitions on children's heart disease.
5. Overnight accommodation for parents of hospitalized children.
6. Programs to bring overseas surgeons or cardiologists to Hong Kong to share experience with local medical staff.
7. Sponsorship for research project in diagnosis and treatment of congenital heart disease.



# Children's Heart Foundation

## Organization Structure



### Executive Committee Members 2005-2006

Hon. Patron	: The Hon. Selina Chow
Chairlady	: Mrs. Rebecca Yung
Vice Chairman	: Dr. Maurice Leung
Secretary	: Mr. Jon Marsh
Treasurer	: Mr. Philip Elder
Members	: Dr. K.T. Chau
	: Ms. Au Wai Kwan
	: Ms. Christine Ho
	: Ms. Monica Woo
	: Dr. David Zweig
	: Ms. Angela Lau
Hon. Advisors	: Dr. S. C. Leung
	: Mrs. Jenny Ho
Hon. Legal Advisor	: Mr. Andy Kung
Hon. Auditor	: KPMG



# Children's Heart Foundation

## Fundraising Committee 2005-2006

Chairman : Dr. David Zweig  
Members : Ms. Michelle Lam  
: Ms. Amy Sung  
: Ms. Christie Wo  
: Ms. Anna Yau  
: Ms. Hilary Tsui

## Parents Support Committee 2005-2006

Chairwoman : Mrs. Jenny Ho  
Members : Ms. Helen Ho  
: Ms. Koon Kit Kwan  
: Ms. Christine Ho  
: Ms. Cheung Sau Ping  
: Ms. Chan Yuk Yin  
: Ms. Connie Lau  
: Ms. Lai Hing Ling  
: Ms. Lau Ngan Yee  
: Ms. Dora So  
: Mr. Leung King Sing



# Children's Heart Foundation

## Message of Chairlady

### Care • Support • Unity

I joined the CHF more than eight years ago when one of my family members was diagnosed with congenital heart disease. I deeply felt and understood the anxiety and stress in facing such challenges. It makes my voluntary work with the CHF much more significant and meaningful. Hence, I deeply honoured to take up the post of Chairlady of the Foundation and continue my service in an all round way.

At this AGM, I will report and summarize the overall activities in 2005 and the first 6 month in 2006. I will also project our path of development in the coming year.

We had held a series of fruitful and fabulous programmes in the last 18 months. These range from the annual Christmas Party and New Year Gathering to the Children's Day Camp and the Summer Camp. There were new classes like "Cooking for Mama", "Puppet tells story", "Art workshop" as well as the Children's Choir. Members also had fun days at Disneyland and Ocean Park. We had also enjoyed a few drama and concert. A number of practical seminars were organized for parents. In addition, the Children's Heart Health Programme was broadly welcomed by the schools. I am also pleased to report that the turnover of the House of the Heart had exceeded 1,000 people in 2005. The figure itself spoke for the value of this service for parents of hospitalized children.

In the past 18 months, the CHF cooperated not only with educational, financial and publishing organizations, we also extended our network to include jewellery shops, beauty centres and department stores. These collective efforts



# Children's Heart Foundation

## Message of Chairlady

from the community had allowed the CHF to arouse people's awareness of children heart disease in different social sectors.

I wish to point out that among these supporters, Nuskin Enterprise Hong Kong Inc. stands out as a remarkable partner. The company has set up the "Nu Skin Children Heart Committee" to motivate its distributors to actively participate in the Heart-to-Heart Charity Walk 2005 and the Nu Skin Game Day. They had raised over HK\$1,400,000 for children with heart disease.

The CHF was honored to be chosen as one of the beneficiaries of Operation Santa Claus 2005. It had not only raised near HK\$900,000 for us, but also promoted public awareness of congenital heart disease. The British Chamber of Commerce in Hong Kong donated half a million to the CHF through its 2006 Annual Ball.

This May, we organized a ladies luncheon entitled "A Beautiful Mind" to raise funds for the House of the Heart. Our children performed professionally at the fashion show. Their marvelous presentation exuded the inner joy and confidence which deeply impressed the guests.

I must thank all corporate and individual donors who had contributed to the steady development of the CHF. In particular, I would like to thank Simon Cheng and Kelvin Ho who, despite their busy work, had taken time to provide superb training to the CHF choir.



# Children's Heart Foundation

## Message of Chairlady

In June this year, we organized the CHF Medical Exchange Programme 2006 and invited Dr. Victor Tsang, a renowned Consultant Cardiothoracic Surgeon from London to Hong Kong. He operated on 4 children with complex heart conditions and shared his professional experience with local paediatric cardiac surgeons. This had not only benefited the patients, but also promoted the standard of and consolidated Hong Kong's position as a paediatric cardiac centre. We wish to expand our cooperation with more organizations in the future.

You may have known that our former chairman, Mr. Duncan Pescod, had left Hong Kong for his now posting in Europe early this year. I would like to take this opportunity to thank him again for his tremendous leadership and contribution to the CHF over the last 11 years. I wish him a very successful career development and hope that he would be with us again in the future.

I must point out that the smooth development of the CHF owes much to the dedication and hard work of the Exco members. Every one has contributed his/her time, efforts, professional knowledge and social network enthusiastically behind each programme, but asking nothing in return. Here is my deep appreciation to each Exco member.

Out of our Exco members, I would like to single out Monica Woo who has grown together with the CHF since she was a young adult. Monica now works as a senior executive in a large corporation. Despite her heavy workload, she has been providing monthly accounting service to the CHF for a number of years. Monica always lends a helping hand in areas where she is needed.



# Children's Heart Foundation

## Message of Chairlady

I also would like to credit another young member Sony So. Over the years, she has enthusiastically assisted the organization of the youth voluntary group. She also willingly shares her experience with young patients. Her positive and joyful attitude certainly has inspired other children to face the challenges of treatment positively.

Katie Wong and Jacky Ha are other active young volunteers who deserve a big applause. These young people have a grateful heart and live in a fruitful way. Their strong sense of mission will certainly lead them into a bright future. They also represent the future development of the CHF. I sincerely wish to see active participation from more young members.

Behind all young members are great parents who devote themselves fully to their families with time and love. Children, please remember the love and care your parents have given to you. May I take this opportunity to extend a special acknowledgment to our parent volunteers and in particular, K S Leung, Gary Lam, Christine Yip, Gigi So and Suyi So. They always support and contribute to the CHF programmes.

Finally, I wish to thank our dedicated employees: Bonnie and Timsik who, despite the very heavy work load, always ensure that all activities are in progress. In addition, Yasmin has joined the rank of part-time staff as the Chief Fundraising Officer. She has successfully invited people of different nationalities to join our fundraising activities.



# Children's Heart Foundation

## Message of Chairlady

Looking forward, we will work towards the following directions:

1. Care: Deepen the care we have for our members and their families
2. Support: Extend our support to more families and expand our network with a wider community; and
3. Unity: to work with one mind and one heart for the welfare of our children and their families.

Rebecca Yung



# Children's Heart Foundation

## Notice of Annual General Meeting

NOTICE is hereby given that an Annual General Meeting of the Foundation will be held at Hong Kong Football Club, No.3 Sports Road, Hong Kong at 2:30 p.m. on Saturday, the 26th day of August 2006 for the following purposes:

1. To consider and approve the Audited Accounts of the Foundation for the period from 1st January 2005 to 31st December 2005 together with the Executive Committee's and Auditor's Reports attached thereto;
2. To elect Executive Committee Members;
3. To appoint KPMG as Honorary Auditors; and
4. To transact any other competent business.

By Order of the Executive Committee

A handwritten signature in black ink, appearing to read 'Jonathan Marsh', written over a horizontal line.

Secretary (Jonathan Marsh)

Date: 27 July 2006

A Member entitled to attend and vote at the Meeting is entitled to appoint a proxy to attend and vote on his behalf. A proxy need not be a Member.



# Children's Heart Foundation

## Major Members' Activities 2005/2006

### Year 2005

Month	Events
Feb	New Year Gathering
Mar	Children's Heart Health Campaign 2005
Apr	Children's Day: Day Camp in Sai Kung
Apr	CHF Children's Choir
Apr	Cooking for Mama
May	Puppet Tells Story
May	Seminar: Understanding Children with Heart Disease
Jun	Annual General Meeting 2004/2005
Jul	CHF Summer Camp
Jul	Appreciation of Concert, "Sponsorship of tickets of "Monkey King Goes on Summer Holiday, Tales from Journey to the West"
Aug	Big Challenge for Children
Aug	Appreciation of Drama, "Sponsorship of tickets of "Oops! Belle the Witch is Gone!"
Sep	Toyota Dream Car Drawing Contest
Sep	Exhibition on Children's Heart Health 2005
Sep	Health Talk for Hong Kong St. John Ambulance
Nov	Interviewed by Supersun
Nov	Visit to Disneyland



# Children's Heart Foundation

## Major Members' Activities 2005/2006

### Year 2005

Month	Events
Nov	CHF Volunteers' Gathering
Dec	Happy Day in Festival Walk
Dec	Happy Day in Ocean Park
Dec	CHF Children's Choir performance for the Operation Santa Claus 2005
Dec	PoPo X'mas 05
Dec	Christmas Party 2005

### Year 2006

Month	Events
Feb	Farewell Dinner for Mr. Pescod & Lunar New Year Gathering
Mar	CHF Children's Choir 2006 (Phase 1)
Mar	Seminar on Interventional Cardiac Catheterization
Apr	Smiling Face
Apr	Happy Easter + BBQ
Apr	Ward Visit by Disneyland
Apr	Cooking Class for Children
Jun	An Arty party



# Children's Heart Foundation

## Major Fundraising Events 2005/2006

### Year 2005

Month	Events
Feb	Slimming Scheme for Charity
Mar	Sunshine House International Pre-school Sport's Day for Charity
Mar	Parkview International Pre-school for Charity Easter
May	King Fook Jewellery Group Charity Program
May	Charity Program of Sincerity Beauty Centre
Jun	Charity Month at Wing On Department Stores
Jun	Seminar by Reader's Digest
Jul	Loving Hearts in Madame Tussauds
Jul	Nu Skin Children's Heart Programme
Jul	eBay Charity Program
Jul	Brand's 170th Anniversary Programme
Jul	118 Anniversary & Charity Sales UNI Mitsubishi Pencil Marketing (HK) Co. Ltd.
Aug	Trappist Omega-3 Milk charity Programme
Aug	"Music Strengthens Your Heart" Charity Concert
Oct	Heart-to-Heart Charity Walk 2005 and Charity Funfair



# Children's Heart Foundation

## Major Fundraising Events 2005/2006

### Year 2005

Month	Events
Nov	La Campagne des Petits "Your favorite" T-shirt design competition
Dec	Operation Santa Claus 2005
Dec	CHF Charity Salsa Night
Dec	JPMorgan: Bring Your Kids to Work

### Year 2006

Month	Events
Jan	NE Mountain Marathon 2006
Mar	The Standard Chartered Bank 2006 British Chamber Annual Ball
Apr	DKNY KID'S "Colour for a Good Cause"
May	CHF Charity Ladies Luncheon
May	Time Warner Market Day 2006

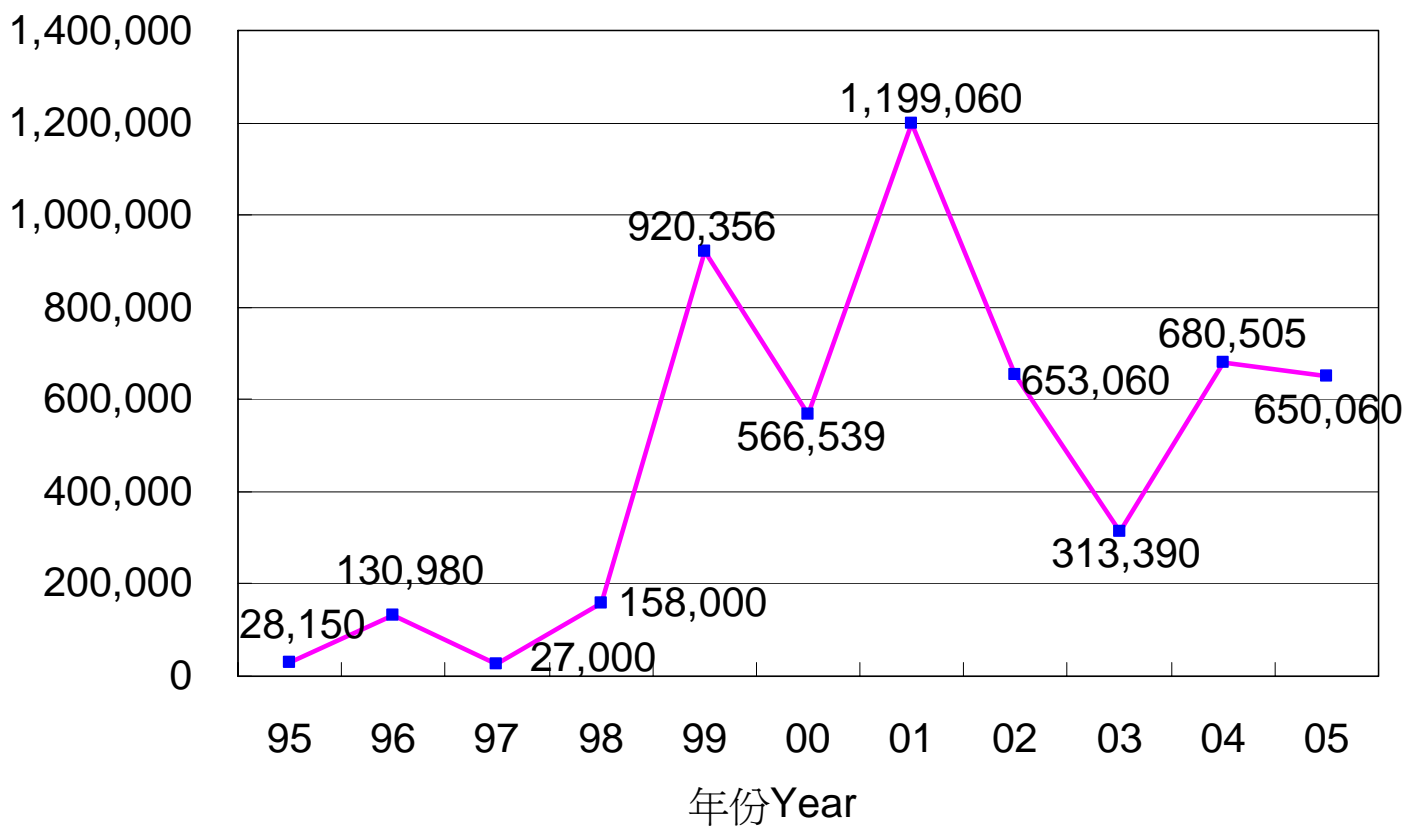


# Children's Heart Foundation

## Statistics

### Expenditure on Sponsorship for Medical Treatment & Equipment

金額Amount

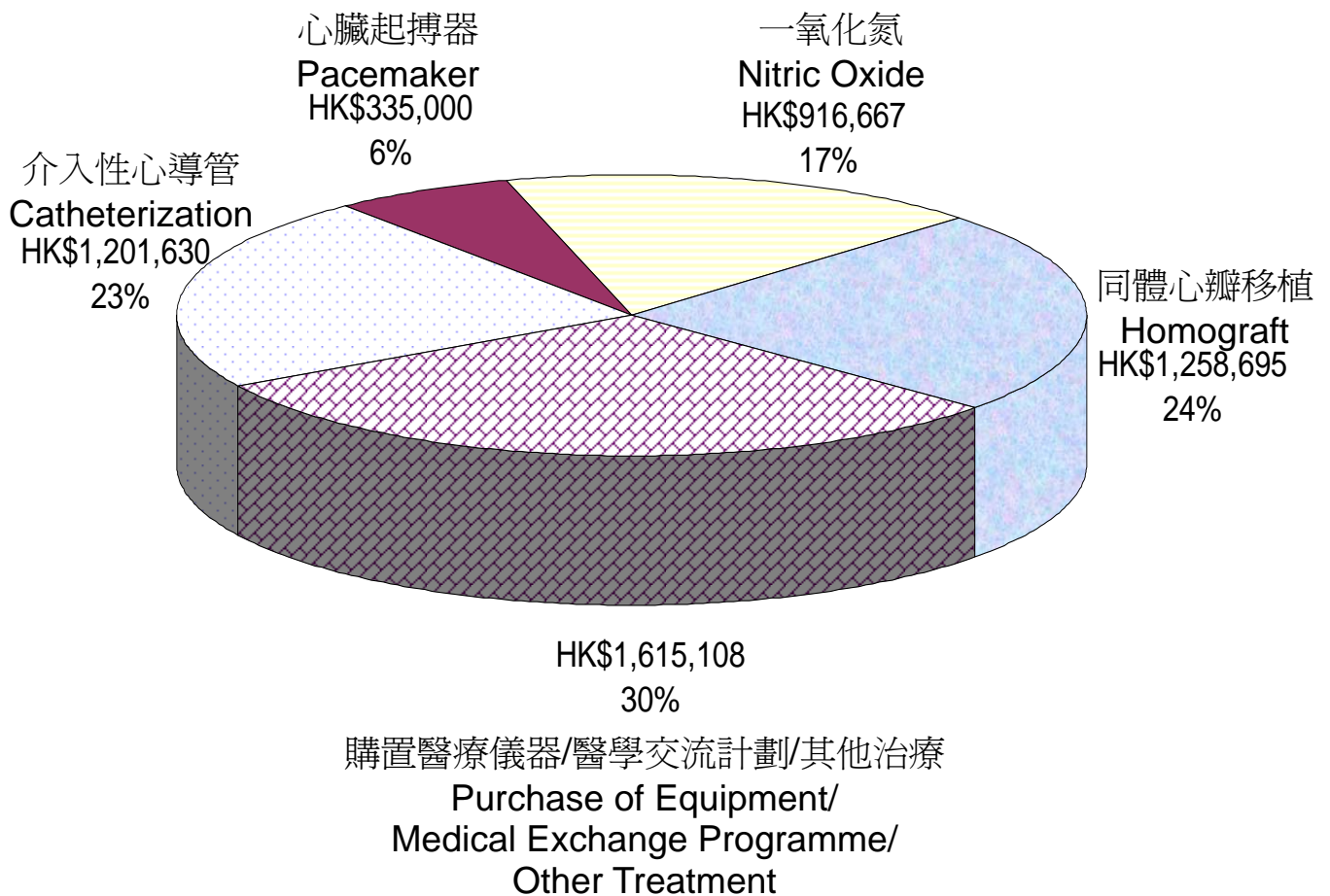




# Children's Heart Foundation

## Statistics

### Distribution of Sponsorship on Medical Aspects (1999 – 2005)

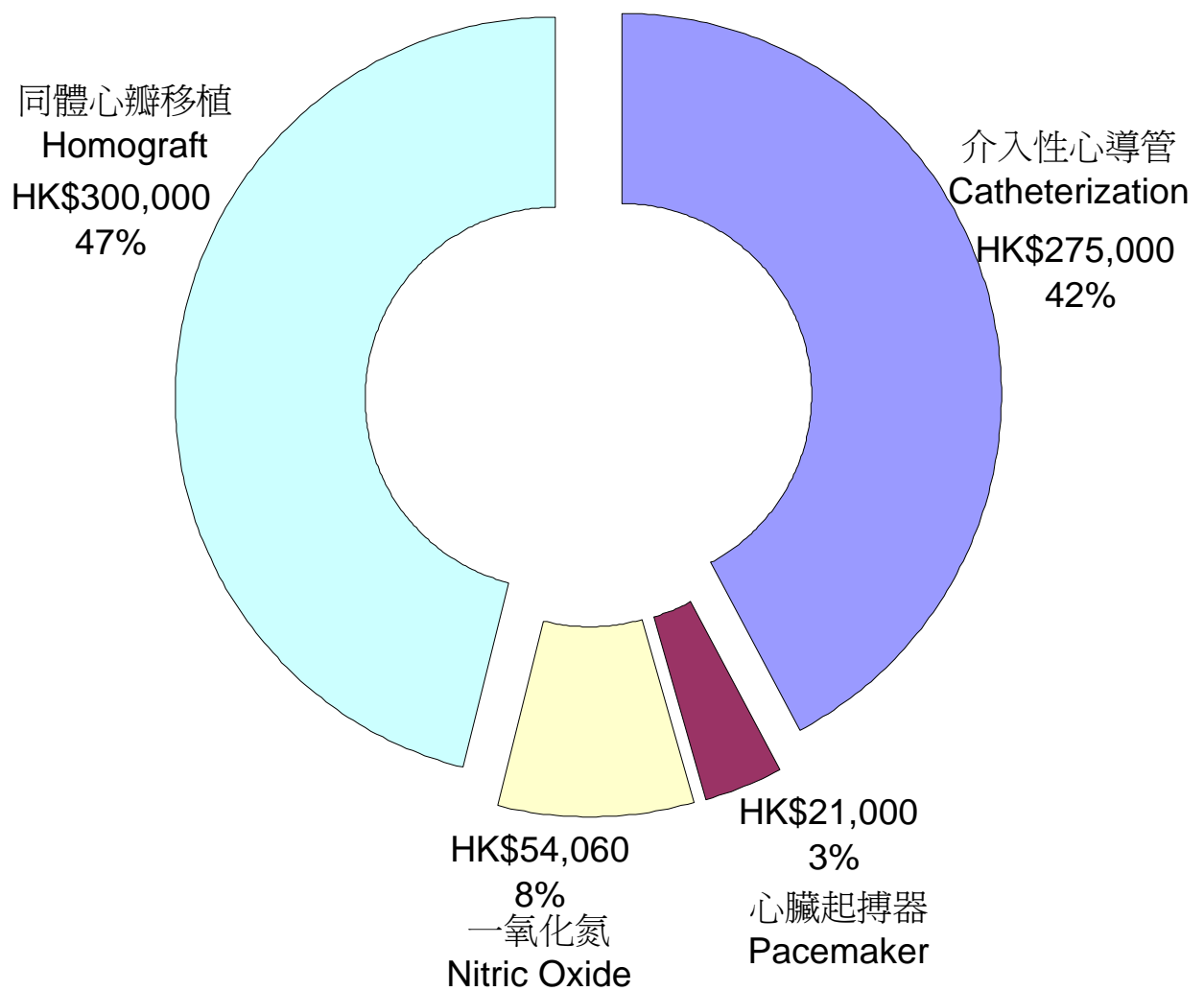




# Children's Heart Foundation

## Statistics

### Distribution of Sponsorship on Medical Aspects in 2005

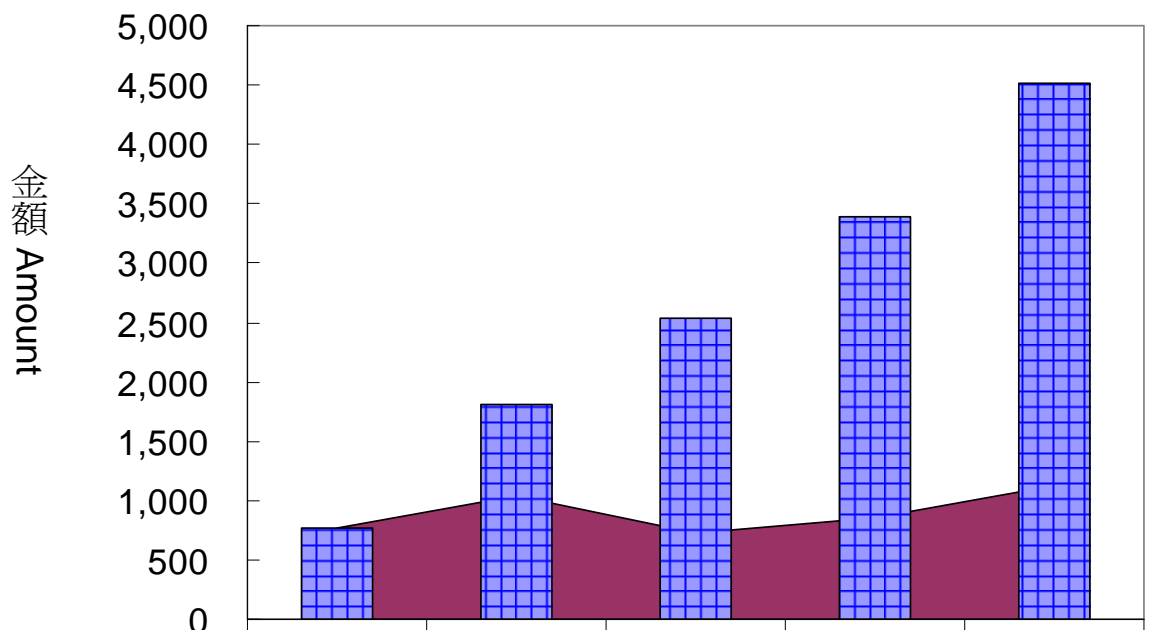




# Children's Heart Foundation

## Statistics

### Number of Attendances & Cumulative Attendances of House of the Heart



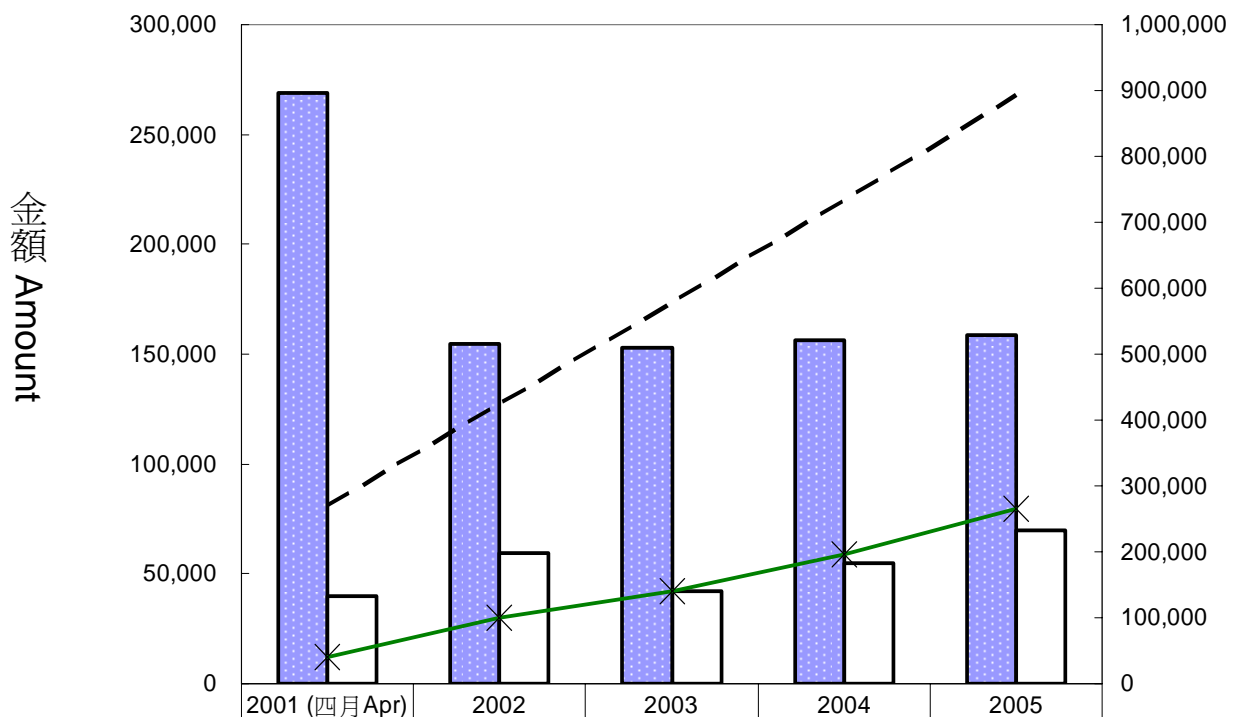
	2001 (四月Apr)	2002	2003	2004	2005
■ 使用人次 Number of Attendances	775	1,036	723	860	1,119
■ 慮積使用人次 Cumulative Attendances	775	1,811	2,534	3,394	4,513



# Children's Heart Foundation

## Statistics

### Income and Expenditure of House of the Heart



	2001 (四月 Apr)	2002	2003	2004	2005
■ 全年支出 Yearly Expenditure	269,106	154,716	152,840	156,473	158,938
□ 全年收入 Yearly Income	39,660	59,398	42,100	54,580	69,980
- - 慮積支出 Cumulative Expenditure	269,106	423,822	576,662	733,135	892,073
— × 慮積收入 Cumulative Income	39,660	99,058	141,158	195,738	265,718



# Children's Heart Foundation

## Statistics

### Expenditure on Educational Programme and Members' Activities

