

Children's Heart Foundation



Annual Report 2010-2011

Address : Flat A, 5th Floor,
122 Pokfulam Road, Hong Kong
Tel : 2553 0331
Fax : 2553 4886
E-mail : chf@childheart.org.hk
Website : www.childheart.org.hk



兒童心臟基金會

Table of contents

Contents	Pages
Notice of Annual General Meeting	P.2
Rundown of Annual General Meeting 2010/2011	P.3
Regulation of Annual General Meeting 2010/2011	P.4
Introduction	P.5
Services	P.6 – P.8
Organizational Structure	P.9 – P.11
Message from the Chairlady	P.12 – P.15
Key Members' Activities 2010-2011	P.16- P.20
Key Fundraising Activities 2010-2011	P.21 - P.23
Key Medical Training and Development Programme 2010-2011	P.24
Statistics Report	P.25- P.30



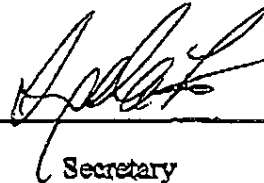
兒童心臟基金會

CHILDREN'S HEART FOUNDATION

NOTICE is hereby given that an Annual General Meeting of the Foundation will be held at Ball Room, 1st Floor, South Pacific Hotel, No. 23 Morrison Hill Road, Wan Chai, Hong Kong at 2:00 p.m. on Sunday, the 18th day of September 2011 for the following purposes :

1. To consider and approve the Audited Accounts of the Foundation for the period from 1st January 2010 to 31st December 2010 together with the Executive Committee's and Auditor's Reports attached thereto;
2. To elect Executive Committee Members;
3. To appoint Pricewaterhouse Coopers Ltd. as Honorary Auditors; and
4. To transact any other competent business.

By Order of the Executive Committee



Secretary

Date:

A Member entitled to attend and vote at the Meeting is entitled to appoint a proxy to attend and vote on his behalf. A proxy need not be a Member.



兒童心臟基金會

Rundown of Annual General Meeting

2010/2011

Time	Content
2:05-2:10pm	Confirm the agenda and rules of the meeting
2:10-2:25pm	EXCO Report by Ms. Jenny Cheng
2:25-2:40pm	Financial Report by Ms. Monica Woo
2:40-2:50pm	Question and Answer on the EXCO Report and Financial Report
2:50-2:55pm	Approve the EXCO Report & Financial Report
2:55-3:05pm	Election of Executive Committee Members for Year 2010/2011 a. Nomination of Candidates b. Polling for CHF EXCO 2011/2012
	Appointment of Honorary Auditor
	Announcement of new Honorary Advisers
3:05-3:10pm	EXCO Group Photo
3:10-3:25pm	Presentation for "Academic Award Scheme 2010"
3:25-3:35pm	Performance of Children's Choir
3:35-4:45pm	Reception Cocktail



兒童心臟基金會

Regulation of Annual General Meeting

2010/2011

1. Run-down and regulation are listed on the Meeting documents. No amendment shall be made unless there is propose.
2. The Executive Committee shall be comprised not less than five and not more than eleven members.
3. Every member, who joined the CHF on or before 18 September 2011 and aged 18 or above, shall have one vote on each discussing issue.
4. Only those with valid voting card can vote.
5. Each agenda should be proposed and seconded before voting.
6. If being appointed, please vote with your own valid voting card and the valid voting card(s) of the proxy.
7. When voting, please vote according to the instruction of the Chair. Please do not put the card voting card down until counting is finished.



兒童心臟基金會

Introduction

The Children's Heart Foundation (CHF) was originally formed as a mutual support group for parents with children suffering from congenital heart disease. The parents realized that sharing experiences and information was a great benefit to all concerned. In 1994, with the support of doctors, nurses and medical social workers at the Cardiac Paediatric Unit of the Grantham Hospital, the CHF was founded as a registered charitable organization devoted to supporting children suffering from heart disease and their families.

Over the years, the Foundation has grown from a small group of volunteers into an organization which has a team of full-time staff and subcommittees specializing in different issues related to children with heart disease. As our organization depends entirely on public support and donations, the volunteers and supporters remain the backbone of the Foundation and the reason for its continuous success.

Objectives

1. To raise public awareness about congenital heart disease.
2. To provide financial and psychological support to families with children suffering from congenital heart disease.
3. To support the development of technology and methods to detect and treat congenital heart disease.



兒童心臟基金會

Services

1. Financial support for families

Patients have to pay for treatments and equipment such as special catheters and pacemakers which are not covered by government subsidies. The CHF has helped hundreds of less well-off families through its Medical Financial Support Scheme to ensure children receive appropriate treatment.

2. Purchase of medical equipment

New technology and medical breakthroughs are an essential part of improving treatment. The CHF helps upgrade existing facilities and services by purchasing the latest high-tech equipment, supplementing the services provided by the public hospitals.

3. Counseling services

All parents expect their baby to be born healthy. When they are told their child has a heart problem, the first reaction is fear; fear of the unknown and fear about the future. Mum and dad are full of questions - What's wrong with my baby? What will happen next? Why did this happen? What treatment does the child need? The CHF provides counseling and support services for parents who need help.

4. House of the Heart

When a child is admitted to hospital for heart surgery or treatment, parents face enormous difficulties and endure great stress. While parents try to look after their child as best they can, they also need a place to rest. The House of the Heart (HOH), just a few minutes' walk from Queen Mary Hospital, allows parents to get a good night's sleep and spend more time with their children. They can freshen up during the day or just take time out to relax. It also reduces the amount of time parents spend travelling to and from the hospital.



兒童心臟基金會

Services

5. Educational programmes

Most people have never heard of congenital heart disease, despite it being one of the most common congenital problems among children. Through various educational programmes and exhibitions, the CHF promotes public awareness about heart health and raises support in the community for these special children. The CHF also organises talks so parents can learn more about caring for children with heart disease, nutritional issues and child development.

6. Parents support group

There are many different types of problems associated with congenital heart disease and the CHF's parents support group meets regularly to provide a channel to discuss issues of concern. Caring for these special children can be difficult and stressful, so talking to people who have the relevant experience, knowledge and understanding can give parents a sense of belonging. Parents can often feel helpless, so it is a real comfort to be able to share their anxiety with others who have been through a similar experience. The CHF works to promote self help and mutual support between these families. Parents can share their experiences at the wards, in the support group meetings and during other activities. This is an effective way of enhancing communications between parents at a very difficult time.

7. Ward visits

Hospitalisation is always stressful and painful for both the children and their families. Unfortunately, spending time in hospital is a common occurrence for children with heart disease. Ward visits by professional teams and trained volunteers are essential as they stimulate the children's development and facilitate positive thinking among parents. Volunteers help with artwork, reading and storytelling, while parent volunteers share their personal experiences, giving other parents the confidence to face the challenges ahead.



兒童心臟基金會

Services

8. Developmental programmes

Because of their physical limitations, some children with heart disease encounter learning problems which affect their education, social lives and psychological development. The CHF organises a variety of programmes like the children's choir, art workshops and leadership training programmes. As they have a lot in common, the children feel comfortable taking part in these activities together. The CHF also organises outdoor and indoor activities such as camping to strengthen the parent-child relationship and boost self confidence.

9. Medical development and exchange

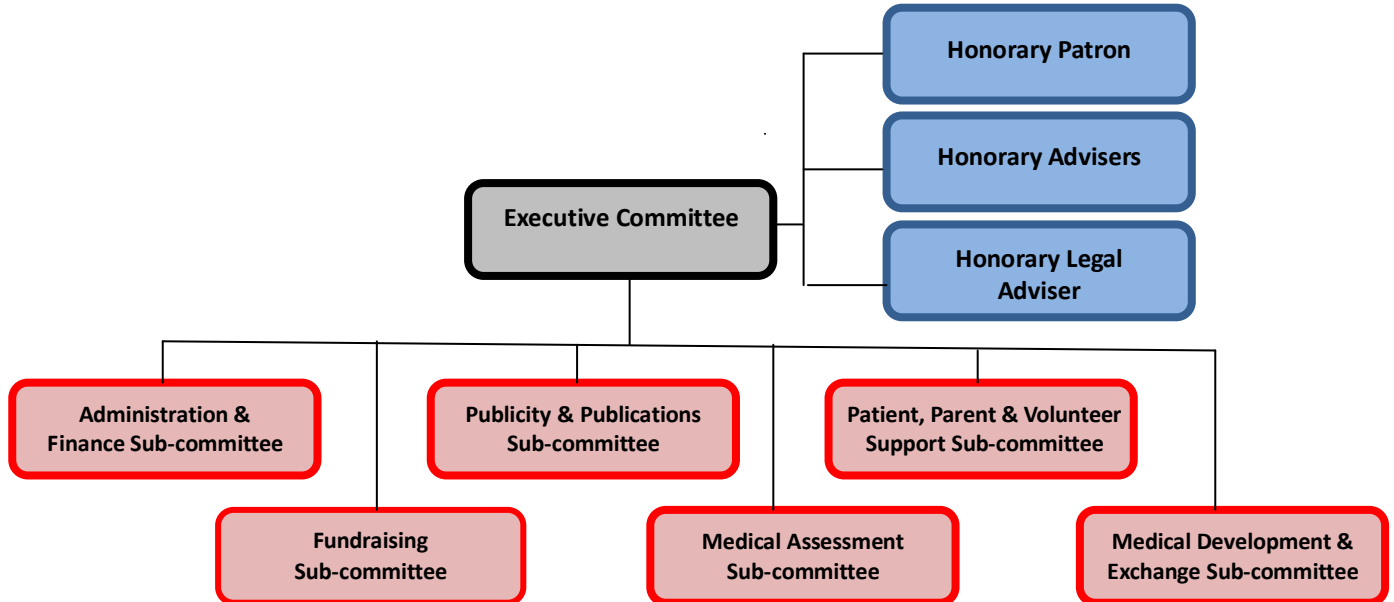
The CHF brings overseas surgeons and cardiologists to Hong Kong to share their experience with local medical staff. This is of vital importance as it helps staff keep up with all the latest advances in treatment and medical technology.

The CHF also sponsors medical staff to receive further training and attend local and overseas seminars and conferences. Through Queen Mary Hospital, the CHF now provides funding so medical staff from Mainland China can receive training in Hong Kong.

10. Research

The CHF provides funding for research into congenital heart disease with an aim to promote medical advancement.

Organizational Structure 1



Hon. Patron : The Hon. Selina CHOW, JP
 Hon. Advisers : Mr. Duncan W. PESCOD, JP
 : Dr. Lawrence LAI, JP
 Hon. Legal Adviser : Mr. Andy KUNG

Executive committee members 2010-2011

Chairlady : Ms. Jenny Y.F. CHENG
 Vice Chairman : Dr. Adolphus K.T. CHAU
 : Ms. Christine W.C. HO
 Secretary : Ms. Angela M.Y. LAU
 Treasurer : Ms. Monica K.T. WOO
 Members : Ms. W.K. AU
 : Ms. Rachel S.P. CHEUNG
 : Ms. Connie Y.L. LAU
 : Mrs. Yasmin MAHBOOBANI
 : Dr. K.T. WONG
 : Dr. T.C. YUNG
 Hon. Auditor : PricewaterhouseCoopers

Organizational Structure 2

Administration and finance sub-committee 2010-2011

Chairperson	:	Ms. Connie Y.L. LAU
Members	:	Mr. Kinze K.S. LEUNG
	:	Mr. Jack Y.H. LO
	:	Ms. Monica K.T. WOO
	:	Mr. Charles K.B. YEE

Fundraising sub-committee 2010-2011

Co- Chairperson	:	Ms. Yasmin MAHBOOBANI
	:	Dr. David ZWEIG
Members	:	Ms. Christie M.S. WO
	:	Ms. Anna H.M. YAU

Publicity and publications sub-committee 2010-2011

Chairperson	:	Dr. K.T. WONG
Members	:	Mr. Charles Y. K. LEE
	:	Mr. Kinze K.S. LEUNG
	:	Mr. Jack Y.H. LO
	:	Mr. Jonathan MARSH
	:	Ms. Christine M.W. YIP

Medical assessment sub-committee 2010-2011

Consultant	:	Dr. Adolphus K.T. CHAU
	:	Dr. T.C. YUNG
Chairperson	:	Ms. Angela M.Y. LAU
Member	:	Ms. Christine W.C. HO



兒童心臟基金會

Organizational Structure 3

Patient, parent and volunteer support sub-committee 2010-2011

Chairperson	:	Ms. Christine W.C. HO
Members	:	Ms. Rachel S.P. CHEUNG
	:	Ms. Helen L.S. HO
	:	Mr. Nelson C.C. HO
	:	Ms. Connie Y.L. LAU
	:	Mr. Kinze K.S. LEUNG
	:	Mr. Jack Y.H. LO
	:	Ms. Lolitter S.K. NG
	:	Ms. Suyi F.Y. SO
	:	Ms. Sony H.N. SO
	:	Mr. Ken M.K. WONG
	:	Ms. Monica K.T. WOO
	:	Mr. Charles K.B. YEE

Medical development and exchange sub-committee 2010-2011

Chairperson	:	Dr. Adolphus K.T. CHAU
Members	:	Ms. W. K. AU
	:	Ms. Christine W.C. HO
	:	Ms. Angela M.Y. LAU
	:	Dr. T.C. YUNG



兒童心臟基金會

Message from the Chairlady

Keep the passion, keep working

Time flies. It has been two years since I was invited to take over as chair of the CHF. Like many members, I too have found it very pleasing and exciting to witness the foundation's growth from a small self-help group to a charitable organisation in these last 17 years. The scale and quantity of the Foundation's activities have expanded rapidly, particularly in the past year. I am delighted to see more and more of the smiling faces of the children and their families taking part in CHF activities.

Our 15th anniversary celebrations last year were marked by a number of activities and fundraising events. The 15th Anniversary Gala Dinner at the Aberdeen Marina Club in September was followed by the Exhibition on Children's Heart Health at Whampoa in October and the Heart-to-Heart Charity Walk on the Peak in November. It was the first time that the walk used the theme of "Children's Hearts Forever" (永保童心) to promote the message of caring for children with heart disease. The famous artist "Ah Chung" designed a special graphic for the Foundation and the walk. Almost 3,000 people took part and, with the support of 180 volunteers, the event raised more than HK\$1 million.

The CHF always had a strong belief in the human touch in the work we do and the importance of companionship. We are devoted to walking with children with heart disease and their families every step of the way in what can be a difficult journey. Meanwhile, we hope to help the children continue to learn and enjoy life by organising activities for them that are both fun and increase their self confidence.



兒童心臟基金會

Message from the Chairlady

Keep the passion, keep working

A number of different companies play an important role in these activities. Besides the visits to Ocean Park and Disneyland with the help of our long term partners, we have also built new partnerships with some enthusiastic corporations to organize activities such as “Golf Exploration”, “Djembe Exploration”, “Art Jamming” and the “Be a Little Watchmaker Workshop”.

As many children members are becoming teenagers, we held a special Self Understanding and Acceptance Workshop and an Adventure Camp. While they may face some physical limitations, we hope to help them prepare to face the challenges of adolescence and build up their spirit of independence and self esteem by co-operating with others.

Besides providing services to the children and their families, the CHF is also involved the development of local paediatric cardiology. Last year, we invited leading surgeon Dr. Victor Tsang to Hong Kong on two occasions to perform four complicated heart operations. In May 2010, the CHF met representatives from Club Rainbow, a charity in Singapore, to share the experience of operating an NGO. This year, we have sponsored three nurses to attend the 14th ASEAN Paediatric Congress and 3rd Asia Paediatric Otolaryngology Meeting in Singapore in April. The nurses also visited the children’s hospital and the cardiac catheterization lab in Singapore. In June, the CHF confirmed it would sponsor a genetic test which studies the relationship between genes and Arrhythmia (irregular heartbeat or abnormal heart rhythm).

As more and more senior medical staff leave the public hospital service, the CHF has decided to put more resources into funding medical development to help maintain the quality of service. We are closely following the development of the Centre of Excellence in Paediatrics and will try our best to express the needs of the patients and their families in order to prepare for future demands.



兒童心臟基金會

Message from the Chairlady

Keep the passion, keep working

The sustainable development of the CHF would not have been possible without the staunch support of our sponsors. On behalf of the Children's Heart Foundation, I would like to express my gratitude to our long-term partners, including Hasbro Far East, The Ohel Leah Synagogue Charity, NU SKIN Enterprise, Hong Kong (Inc.), Kaplan, Standard Chartered Bank (Hong Kong) Limited, CIBC, Goldman Sachs, Bupa (Asia) Limited and the Australia and New Zealand Banking Group.

Meanwhile, we are honoured to have gained the support of several major large retail stores. Toys"R"Us, Jusco and Free Duty have kindly placed CHF donation boxes and leaflets in their shops and we have also built up new partnerships with Frederique Constant, Pearl's and Mannings. Working with retail businesses helps to raise public awareness about congenital heart disease, encouraging more people to support children with heart disease and their families.

The CHF set up the Medical Development & Exchange Sub-committee in 2007 to help children from mainland China. We sponsor visits by mainland paediatric staff to Hong Kong for training. In the future, the CHF would like to co-operate with the relevant charities to sponsor poor children in need of complex heart surgery. We believe we can help more children as a result of our efforts in this area.

As mentioned earlier, we strongly believe in the human touch. We would not have been able to achieve anything without our supporters. We thank the selfless dedication of the hundreds of volunteers who have given up their time to make the CHF activities successful. We also treasure the efforts of the Executive Committee and sub-committee members in leading the CHF forward. We would like to take this opportunity to thank everyone for their tremendous support. You make the CHF a very special organization.



兒童心臟基金會

Message from the Chairlady

Keep the passion, keep working

Also, I would like to express our special thank to the KPMG for being the CHF Honor Auditor since 2004. And it is our honor that the PricewaterhouseCoopers (PwC) has confirmed to be our new Honorary Auditor following the departure of KPMG. We are so proud of the professional and efficiency of the PwC who helps finish the financial statement of CHF 2010 within a short period. I, on behalf of the Children's Heart Foundation, would like to express our sincere gratitude to both the KPMG and PwC.

Looking ahead, we hope to expand our social services to help and support the children, teenagers and adults who suffer from congenital heart disease. We want to establish a volunteer team, not only for ward visits but also for regular home visits. At the same time we look forward to setting up the first Parents Resource Centre to provide a convenient place for parents and patients to meet and obtain help and support. We understand that every single family is carrying a different kind of financial and psychological burden. The CHF will try our best to launch new schemes to help our children and we look forward to seeing even more of those big smiles on their faces.

Last but not least, please let me take this opportunity to once again say a big "Thank you" for all your support and effort on behalf of the Children's Heart Foundation. We promise to maintain our passion for helping children with heart disease and keep working with you all.

Thank you very much!

Jenny Cheng
Chairlady

Key Members' Activities 2010-2011

2010

	Month	Event
1	Jan	Friends of CHF: Presentation Ceremony and Gathering
2	Feb	Celebrating Chinese New Year at the Ward
3	Feb	New Year Gathering
4	Mar	Caring Company Exhibition
5	Mar	HKPC Toys Bank Fun Day
6	Apr	Visit to Noah's Ark
7	Apr	Healthy Life Camp
8	Apr	We Can: Visit to Yakult Factory
9	Apr	Talk: Basic First Aid and CPR for Children
10	Apr	Training Workshop for Ward Visit
11	May	Disneyland Park Visit
12	May	Peegaboo - the 9th Parents' Journal Exhibition
13	May	Adventure Camp for F.1-F.4
14	June	Leadership Adventure Training Camp
15	June	Visit to Disneyland
16	July	NuSkin - the Works of Dessert
17	July	Bakery Fun
18	July	Academic Award Scheme 2010



兒童心臟基金會

Key Members' Activities 2010-2011

2010

	Month	Event
19	July	Summer Camp
20	July	Overnight Adventure Camp
21	Aug	Madame Tussauds: Happy 10th Birthday
22	Aug	We Can: Making Pizza
23	Aug	Masked Rider Fest Hong Kong 2010
24	Aug	Ocean Park: Ocean Explorer
25	Aug	Heart Matters: Understanding the Developmental Needs of Children from a Psychological Perspective
26	Aug	CHF Newsletter (Summer)
27	Sept	15th Anniversary Video
28	Sept	15th Anniversary Special Edition
29	Oct	Visit to Cathay Pacific
30	Oct	Balloon Twisting Class
31	Oct	Exhibition on Children's Heart Health 2010
32	Nov	Annual General Meeting 2009-2010
33	Nov	Kaplan's Day at Disneyland
34	Dec	Heart Health Series: Information Corner
35	Dec	Christmas Party



兒童心臟基金會

Key Members' Activities 2010-2011

2010

	Month	Event
36	Dec	CHF Newsletter (Winter)
37	July-Dec	CHF Children Choir

2011

	Month	Event
1	Jan	Friends of CHF: Presentation Ceremony and Gathering
2	Jan	Educational Talk at St. Francis Xavier's School, Tsuen Wan
3	Feb	New Year Ward Visit
4	Feb	2011 Baby Show in Spring and Child Growth Education Expo
5	Mar	New Year Gathering
6	Mar	Children @ Disneyland
7	Mar	Bakery Fun
8	Mar	Training Workshop for Ward Visits
9	Apr	Golf Exploration
10	Apr	Caring Company NGO Partnership Day 2010-2011
11	Apr	CHF Newsletter (Spring)

Key Members' Activities 2010-2011

2011

	Month	Event
12	May	"Love to Encourage" Music Concert
13	June	Leadership Adventure Training Camp
14	June	ABC with Secondary Students
15	June	BUPA Global Challenge – Walk for Your Health at Ocean Park
16	July	Summer Camp
17	July	McDull and Mrs. Mak Wax Figure Opening Ceremony
18	July	Indoor Shooting Leadership Training Programme
19	July	Djembe Exploration
20	Aug	Gala Premiere
21	Aug	Art Jamming
22	Aug	Frederique Constant Charity Sales
23	Aug	Overnight Adventure Camp
24	Aug	Visit to Cathay Pacific
25	Aug	Frederique Constant "Be a Little Watchmaker" Workshop
26	Sept	Heart Health Series: Information Corner at Island Resort Mall
27	Sept	Annual General Meeting 2010-2011
28	Sept	CHF Academis Award Scheme 2011



兒童心臟基金會

Key Members' Activities 2010-2011

2011

	Month	Event
29	Feb – May	CHF Children Choir Phase I
30	June - July	Frederique Constant “My Clock” Design Competition
31	June-Dec	Ward Visits
32	June-Dec	Heart Health Series: Care Our Heart
33	July-Aug	Workshop: Self Understanding and Acceptance
34	July-Sept	Music Workshop
35	July-Dec	CHF Children Choir Phase II

Key Fundraising events 2010-2011

2010

	Month	Event
1	Jan	North East Mountain Marathon 2010
2	Mar	South Island School The Innovation Fashion Show
3	May	Learning Plus 10 th Anniversary Charity Party
4	May	Charity Sales at Peegaboo – The 9 th Parents; Journal Exhibition
5	Sept	CHF 15 th Anniversary Gala Dinner
6	Oct	Charity Sales at Exhibition on Children's Heart Health 2010
7	Nov	Heart-to-Heart Charity Walk 2010
8	Dec	Headland Homes Limited: Christmas Party
9	Apr-Dec	Fuji Xerox (HK) Customer First Care Programme
10	Aug-Sept	Kaplan Cookies Sales
11	Annual	Corporate Donation Project 2010: - Australia and New Zealand Banking Group - Hasbro Far East Charitable Programme - The Ohel Leah Synagogue Charity 2010 - UBS AG Matched-Giving Programme
12	Annual	SCB Flea Market Donation
13	Annual	CHF Donation Box
14	Annual	CHF T-shirt Charity Sales



兒童心臟基金會

Key Fundraising Events 2010-2011

2011

	Month	Event
1	Jan	North East Mountain Marathon 2011
2	Jan	Charity Sales at Educational Talk at St. Francis Xavier's School, Tsuen Wan
3	Feb	Charity Sales at 2011 Baby Show in Spring and Child Growth Education Expo
4	Feb	White & Case Charity Sales 2011
5	Feb	Charmonde Watches Charity Programme
6	Apr	Bulk Mailing Campaign: CLP
7	Apr	HKU St. John's College RTI Marathon
8	May	Fitness First International Week
9	June	BUPA Global Challenge – Walking for Your Health
10	Aug	Bulk Mailing Campaign: DBS
11	Oct	Heart-to-Heart Charity Walk 2011
12	Jan-Apr	Fuji Xerox (HK) Customer First Care Programme
13	May-Oct	Nicenoon Far East "Germfree 24" Charity Sales
14	June-Sept	Frederique Constant – Charity Campaign
15	Sept-Oct	Pearl's Mosquitout Bracelet Charity Sales
16	Jan-Dec	SCB Flea Market Donation



兒童心臟基金會

Key Fundraising Events 2010-2011

2011

	Month	Event
17	Jan-Dec	Corporate Donation Project 2011: - The Ohel Leah Synagogue Charity 2011 - Hasbro Far East Charitable Programme - Operation Santa Claus 2011
18	Jan-Dec	Placing CHF Donation Box
19	Jan-Dec	CHF T-shirt Charity Sales



兒童心臟基金會

Key Medical Training and Development Programme 2010-2011

2010

Month	Project
Mar	Medical Exchange Programme - Dr. Victor Tsang Visit
Apr	Sponsorship on a Medical Research: The Impact of Volume Overload on Right Ventricular Cell Death
May	Medical Exchange Programme - Dr. Victor Tsang Visit
Nov	Sponsorship for the procurement of expensive drugs for patients suffering from pulmonary hypertensive problem

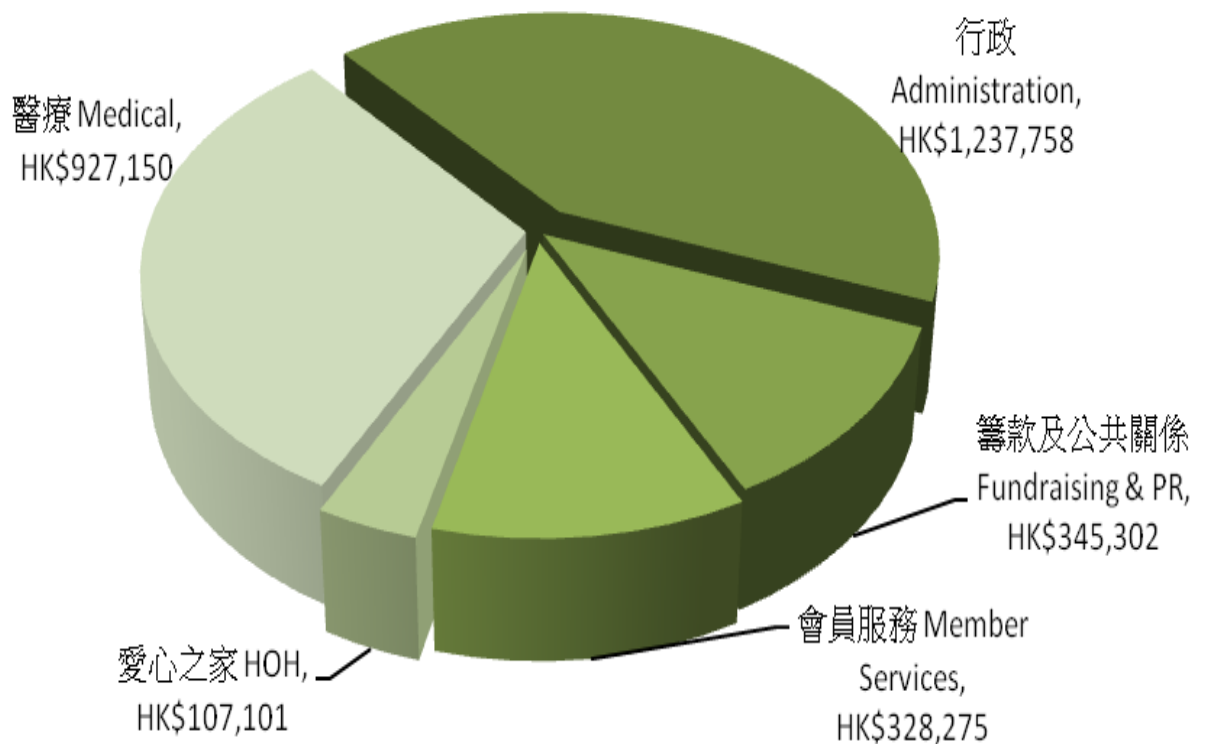
2011

Month	Project
Apr	Medical Exchange Programme – Sponsored 3 nurses to attend a medical meeting in Singapore
Aug	Sponsorship on a Medical Research: Stopping SADS-stories from Happening – Genetic Diagnosis of SADS (Sudden Arrhythmia Death Syndromes)

兒童心臟基金會

Statistics Report – 1

Expenditure Distribution of the CHF 2010-2011



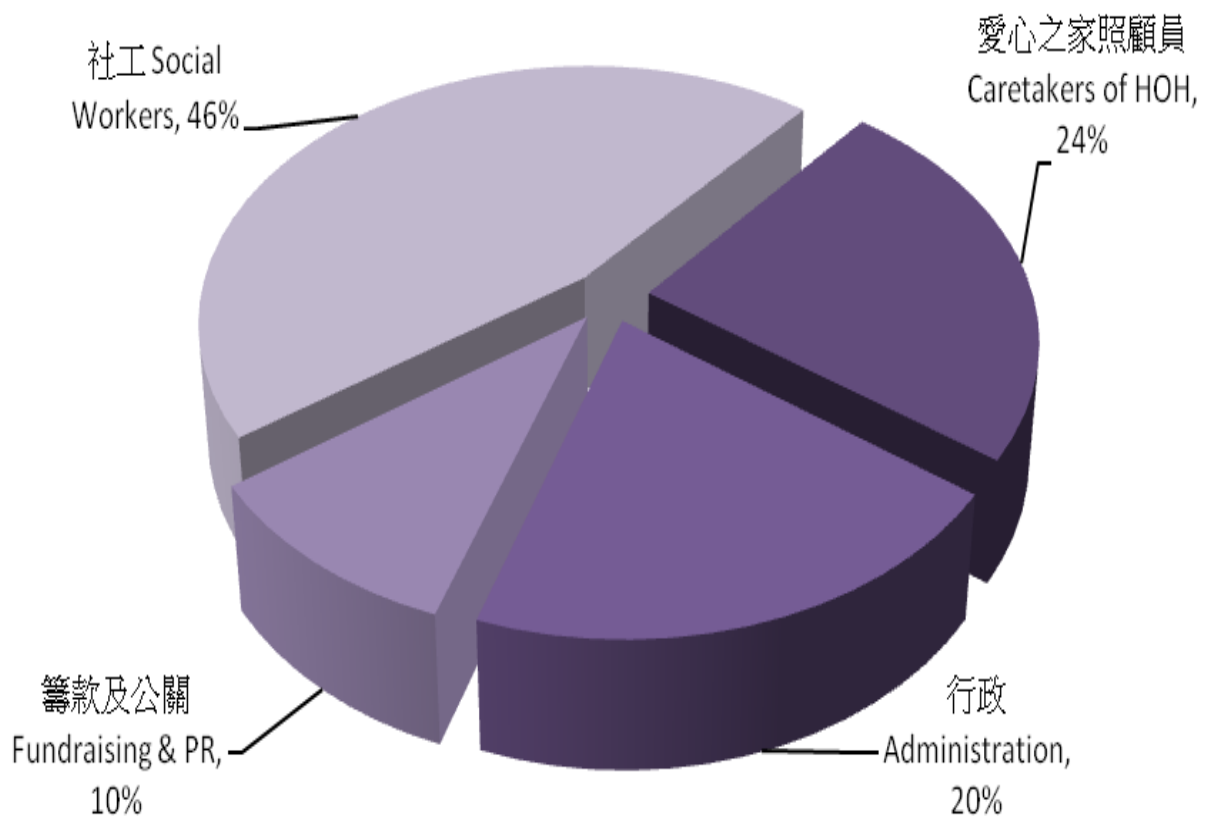
Remark 1: Data comes from the Audit report 2010-2011.

Remark 2: Above 80% of the Administration is the staff cost. Details break down is shown in Statistics Report 2.

兒童心臟基金會

Statistics Report – 2

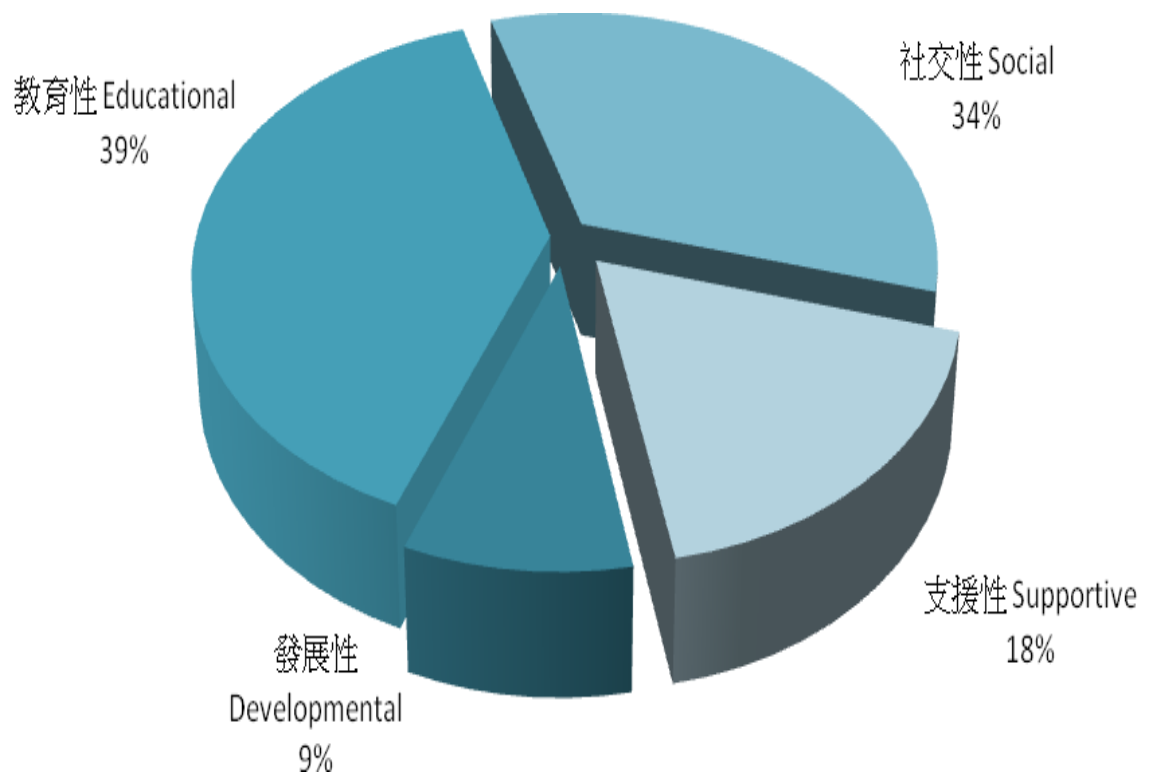
Expenditure Distribution of the CHF Staff 2010-2011



兒童心臟基金會

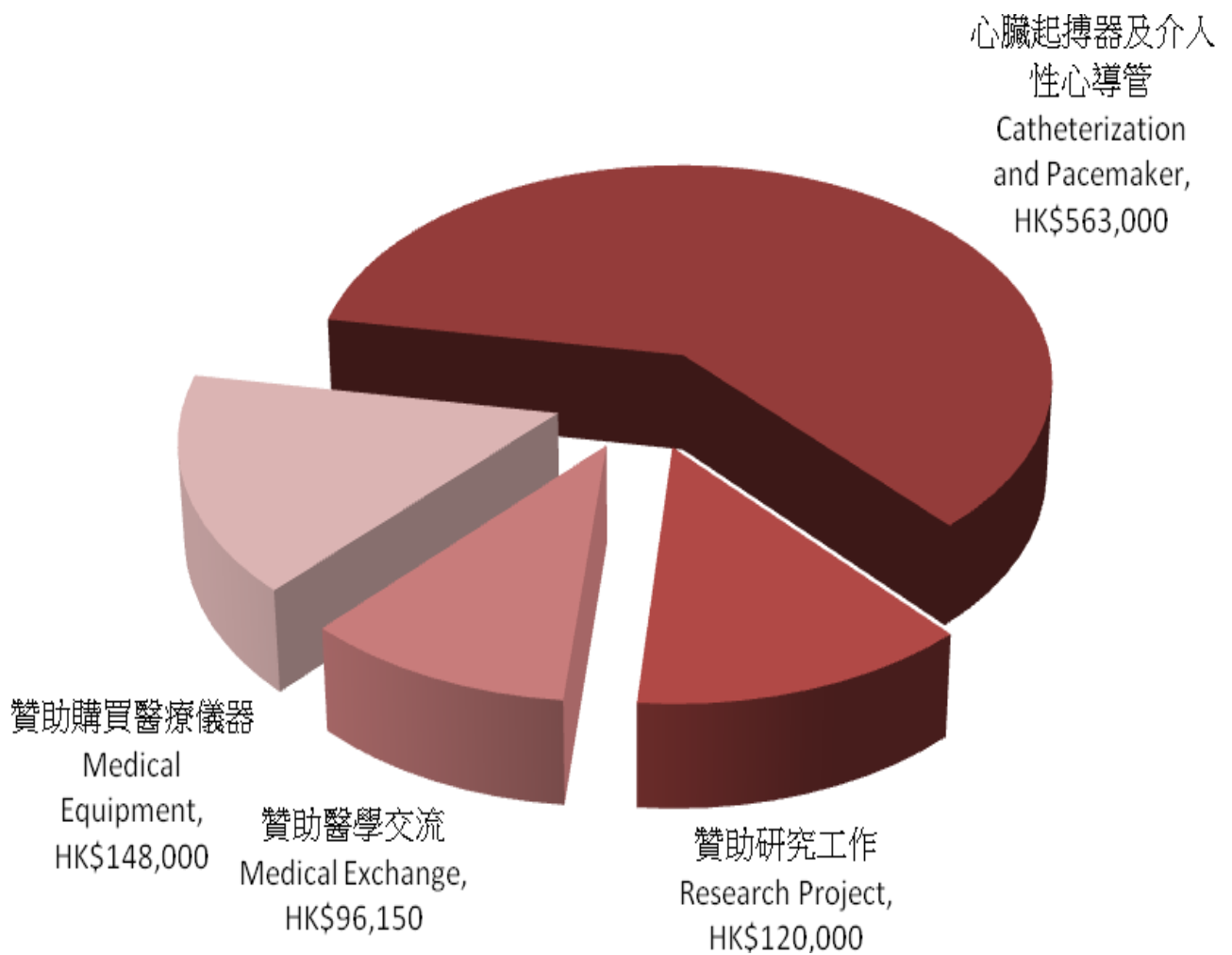
Statistics Report – 3

Expenditure Distribution of the Member Services 2010-2011



Statistics Report – 4

Distribution of Medical Sponsorship in 2010



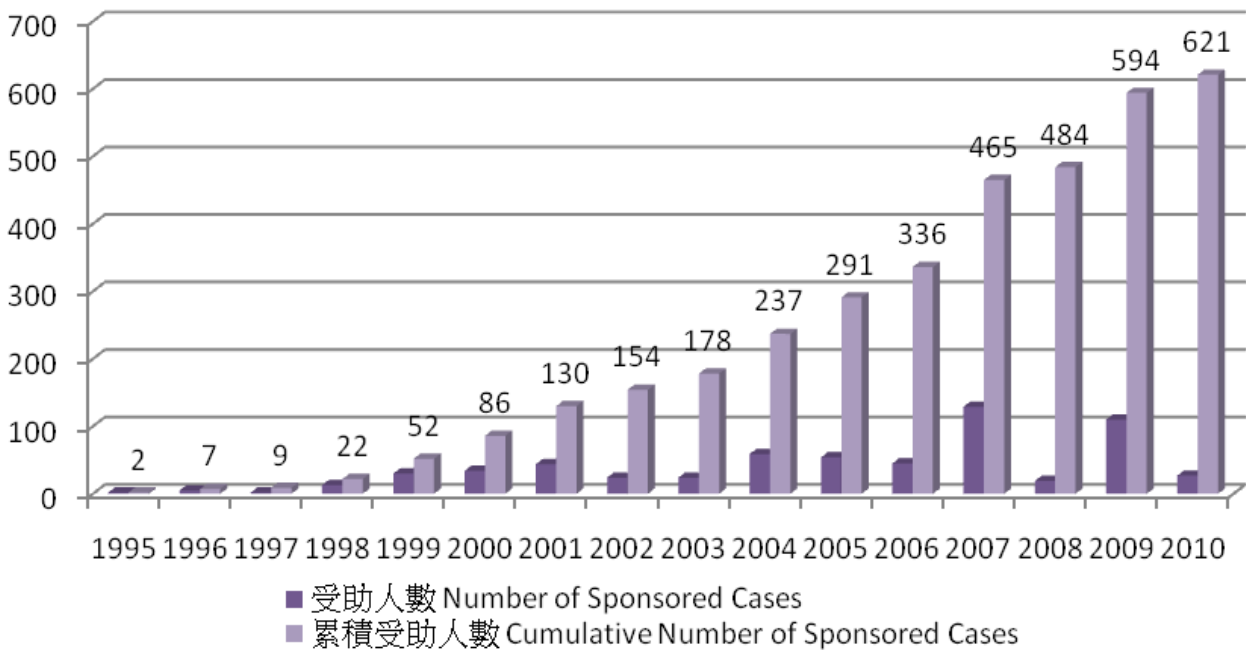


兒童心臟基金會

Statistics Report – 5

Number of Case on Sponsorship for Medical Treatment 1995-2010

受助人次 Number of Cases



	1995	1996	1997	1998	1999	2000	2001	2002
受助人數 Number of Sponsored Cases	2	5	2	13	30	34	44	24
累積受助人數 Cumulative Number of Sponsored Cases	2	7	9	22	52	86	130	154
	2003	2004	2005	2006	2007	2008	2009	2010
受助人數 Number of Sponsored Cases	24	59	54	45	129	19	110	27
累積受助人數 Cumulative Number of Sponsored Cases	178	237	291	336	465	484	594	621

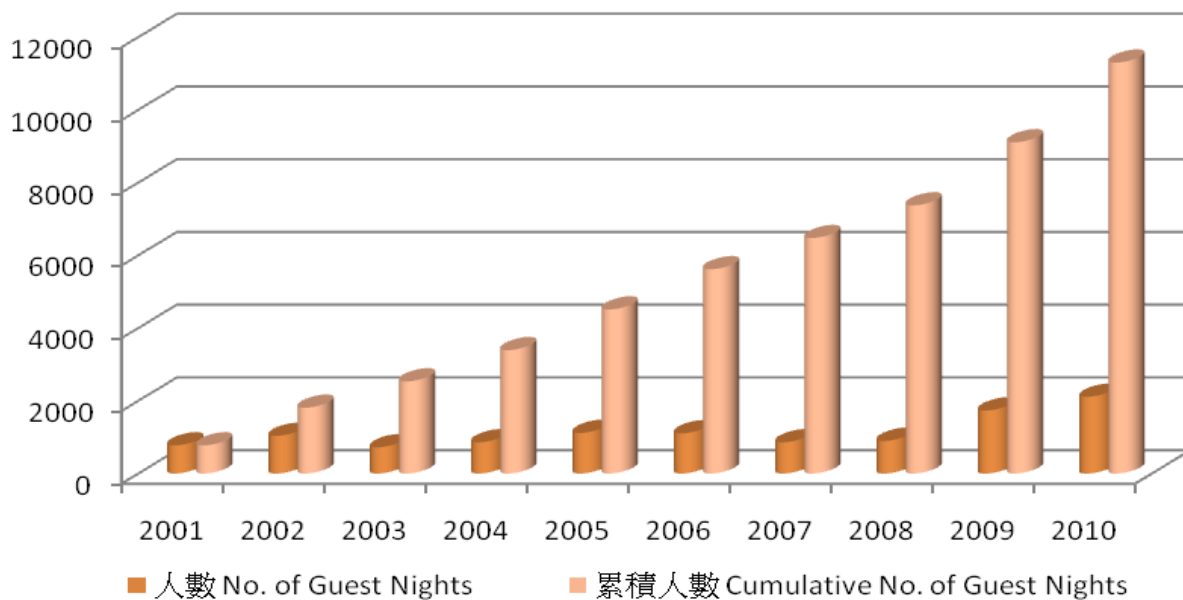


兒童心臟基金會

Statistics Report – 6

Number of guest nights and cumulative guest nights at the House of the Heart

人數 No. of Guest Night



	2001	2002	2003	2004	2005	2006	2007	2008	2009	2010
使用人次 Guest nights	775	1,036	723	860	1,119	1,105	858	899	1,729	2,110
累積使用人次 Cumulative guest nights	775	1,811	2,534	3,394	4,513	5,618	6,476	7,375	9,104	11,214